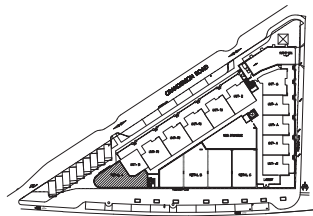
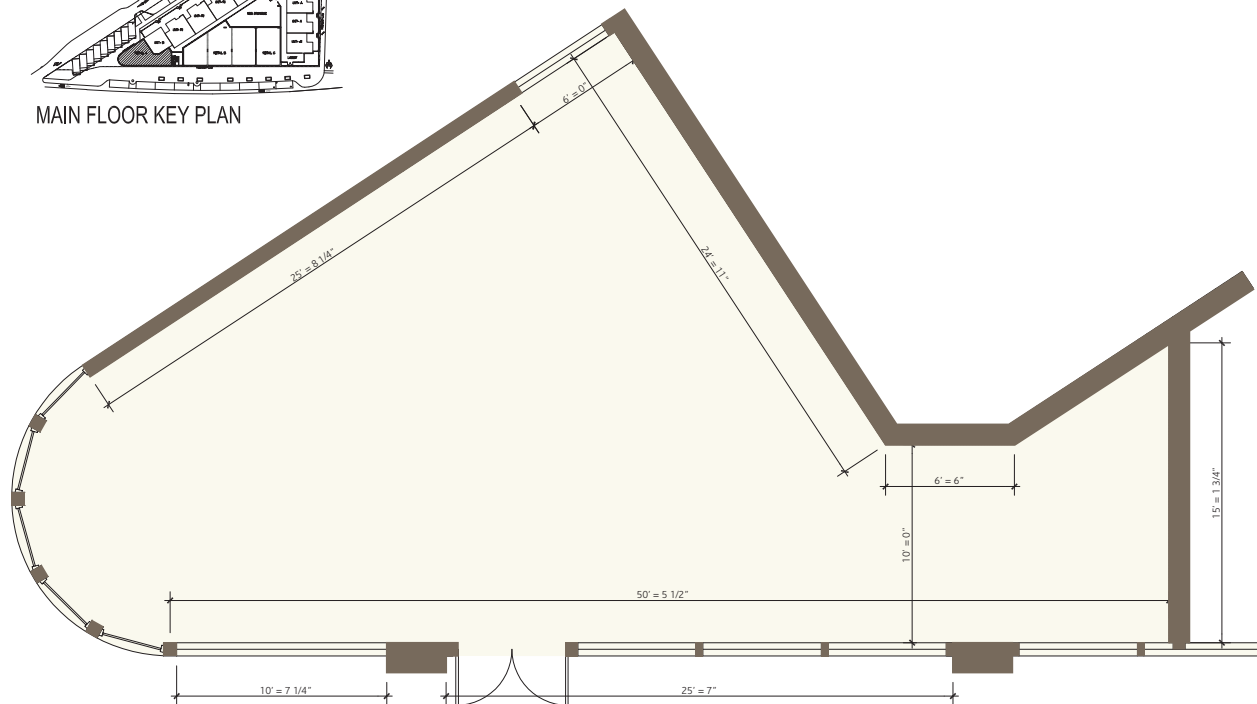



  
**THE GRANDERSON**
  
 LANGFORD'S NEW URBAN LANDMARK

The GRANDERSON features nearly 6,000 sq. ft. of commercial space fronting Goldstream Avenue. This space would be perfect for both office space or many retail ventures.

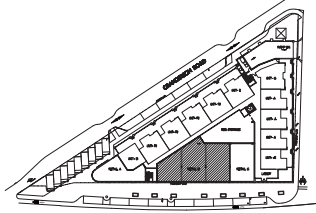


MAIN FLOOR KEY PLAN

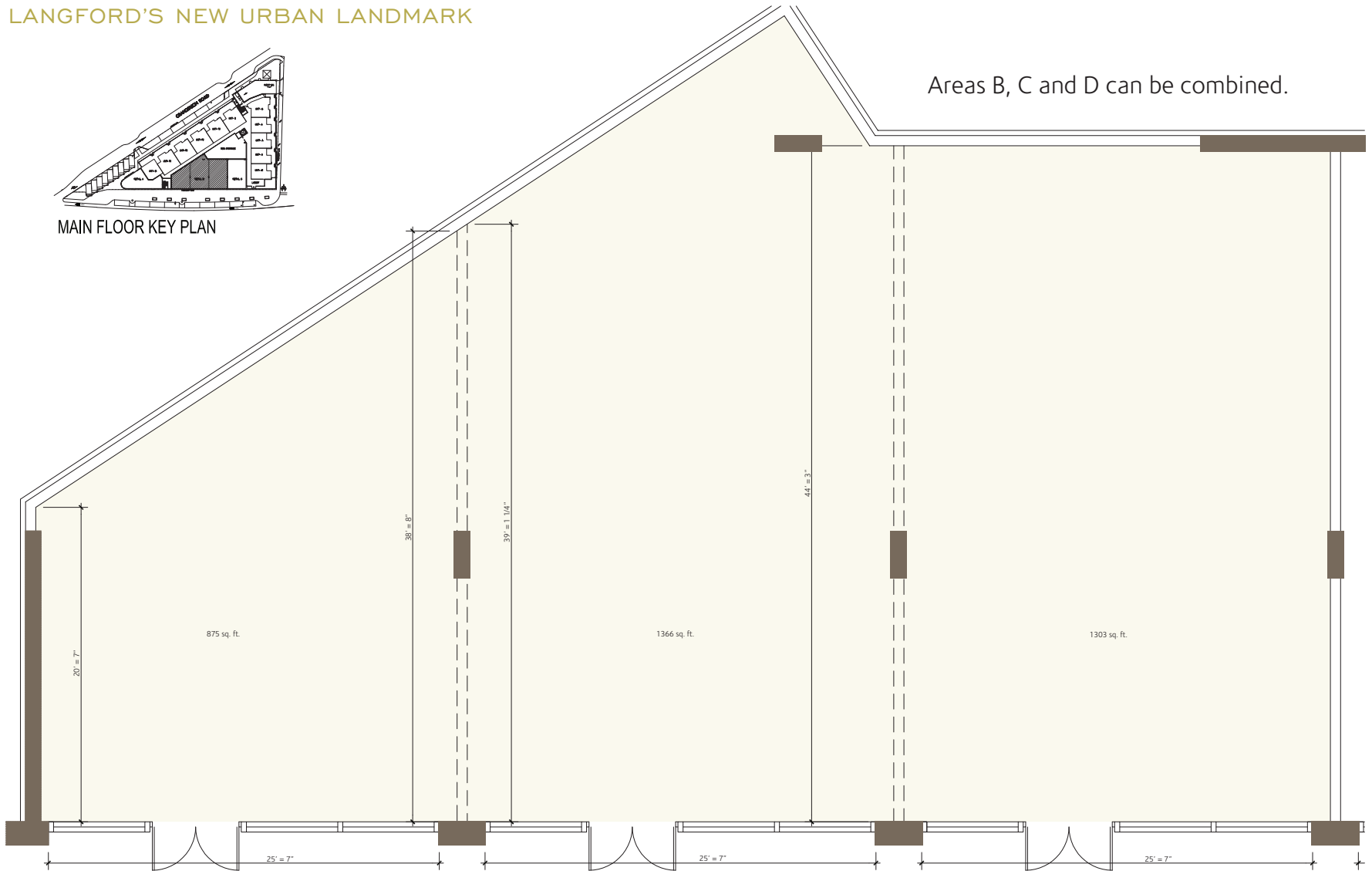


**Area A**
  
 1182 sq ft.

THE GRANDERSON  
LANGFORD'S NEW URBAN LANDMARK



MAIN FLOOR KEY PLAN

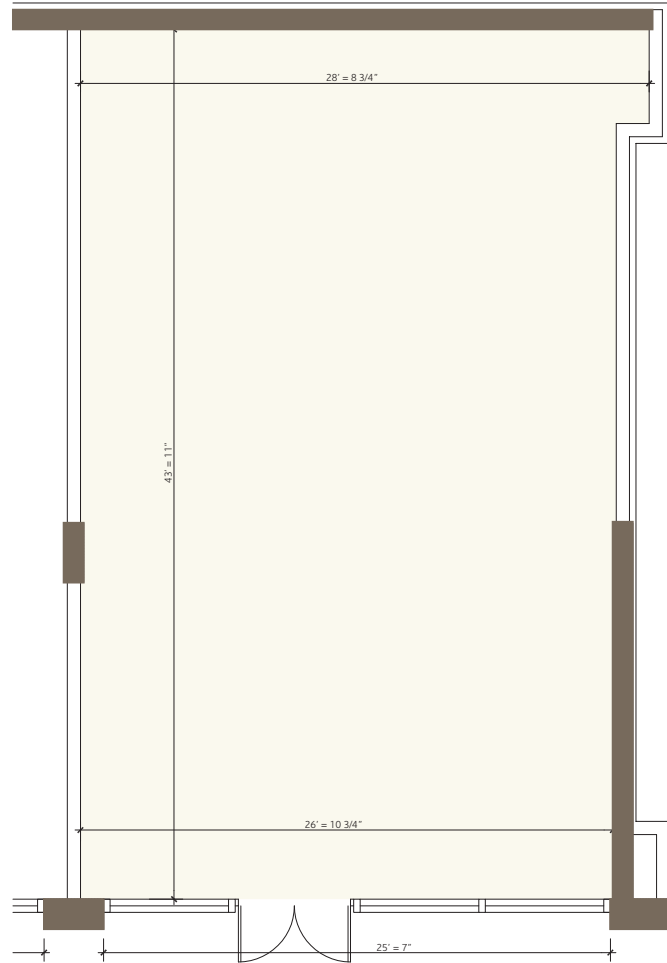
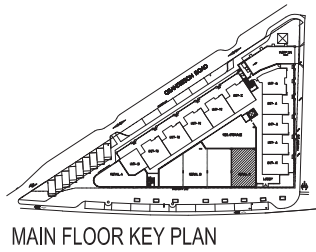


**Area B**  
875 sq ft

**Area C**  
1366 sq ft

**Area D**  
1303 sq ft

Illustrations are approximate representations of features described. The builder reserves the right to make modifications and changes. Sizes and Dimensions are approximate. Actual floor plans and square footages may vary. E. and O.E.



**Area E**  
1263 sq ft